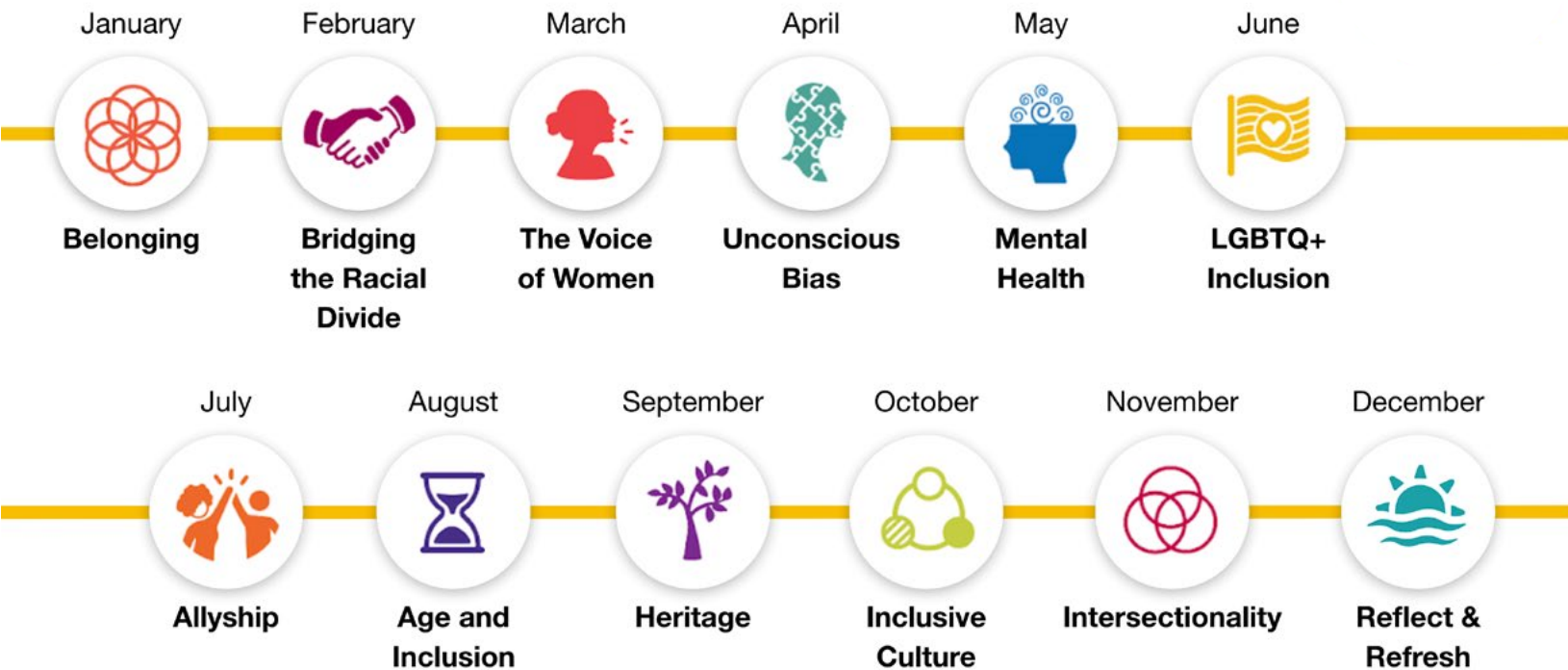


A scalable DEI program for everyone

Looking for a DEI program that's all put together and ready for rollout to your whole team? Our Inclusivv Membership is designed to make it as easy for you to give everyone a seat at the table.

Our Inclusion and Belonging Journey is a curated monthly program of courageous conversations, designed to deepen understanding around important topics, develop emotional intelligence, and inspire meaningful behavior change.



The Inclusivv Membership delivers a shared learning journey of community conversations, learning resources and suggested actions for deeper engagement.

- **9.5** out of 10 recommend this learning experience
- **93%** felt heard and valued for their perspectives
- **79%** learned new ideas and perspectives
- **86%** felt more connected to others

“ It was so impactful to have these conversations across different organizations. New perspectives helped conversation flow freely and expanded my mind.

Victoria Mayo

Culture & Inclusion Program Manager
FormLabs

Contact jenn@inclusivv.co for more information or [schedule a demo](#).